

# Roth operation mode switch (heating/cooling) RXT 240

## Installation instructions



### Roth operation mode switch RXT 240

The cable-connected change-over switch is distinguished by easy installation and simple operation. In combination with the Roth heating/cooling connection module and the RRT 227 room thermostats, the mode for the entire individual room regulation unit can be controlled from a central point.

The four modes, automatic (only possible in combination with an external timer signal), comfort, lowering and cooling increase user comfort and the energy saving potential.



### Technical data

Power supply

230 V AC, 50 Hz, (do not use different phases)  
24 V AC +/-20 % 50 Hz via an external isolating transformer according to EN61558-2-6

Safety

EN 60730-1/2-9, safety class II (EN 60730) 230 V  
EN 60730-1/2-9, safety class III (EN 60730) 24 V  
Overvoltage category II

Outputs

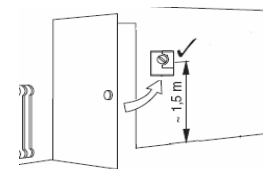
24 V model: maximum for 15 room thermostats RRT 227  
230 V model: maximum for 15 room thermostats RRT 227 24 V

Ambient conditions

- Operation between 0 °C and 60 °C
- Humidity 25 °C, 80 % (without condensation)
- IP 20 (EN 60529), contamination degree 2
- Rated impulse withstand voltage 2500 V

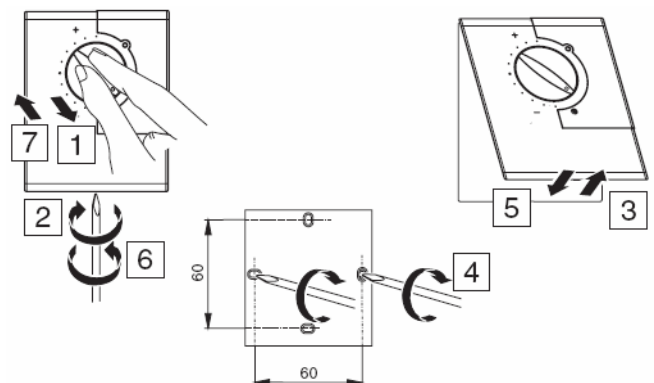
### Attachment

Ideally attach the Roth operation mode switch near to doorways. This enables easier access to choose a mode for the entire system (automatic, comfort, lowering, cooling).



### Installation steps

- 1 Remove the control knob
- 2 Loosen screw on underside of front section
- 3 Remove front section
- 4 Secure attachment plate with two screws: horizontal or vertical at a distance of 60 mm
- 5 Re-attach front section
- 6 Tighten screw
- 7 Put control knob back on



# Roth operation mode switch (heating/cooling) RXT 240

## Installation instructions

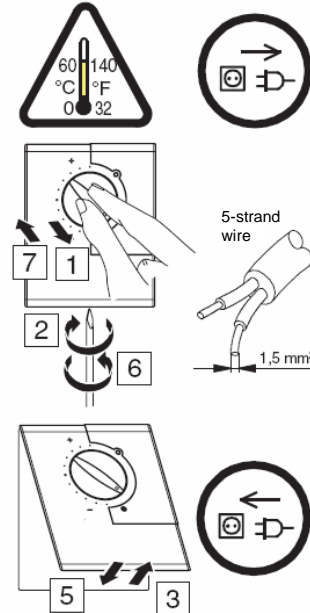


### Electrical connection

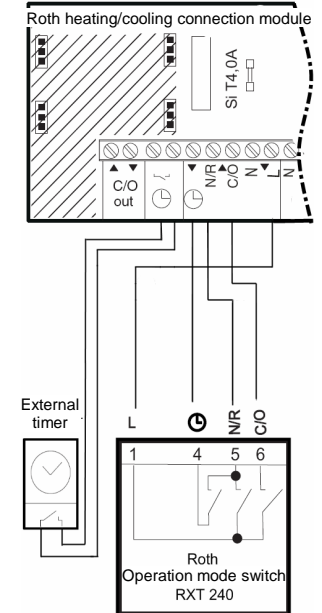
- ⚠ Hazard from live parts behind the cover.
- ⚠ Installation only by a qualified electrician.
- ⚠ Make sure it is de-energized before beginning any work.
- ⚠ Only reconnect the voltage after completed connection and installation.

**Note**  
The operation mode switch is used for the 24 V and the 230 V connection module.

### Installation steps



### Connection diagram



### Mode selection

The mode is selected using the rotary switch on the operation mode switch (automatic, comfort, lowering, cooling).



- Automatic operation
- Comfort mode
- Lowering mode
- Cooling mode

The system works with an external timer according to the selected program.  
Without an external timer, the system works in comfort mode.

Constant comfort mode, regulation according to the thermostat setting in the individual rooms, e.g. 20 °C.

Constant lowering mode, temperature according to the room thermostat setting in the individual rooms, -3 °C.  
(Example: setting = 20 °C, then 20 °C - 3 °C = 17 °C.)  
This means the temperature can be lowered without having to change the set value for comfort mode.

Air conditioning (e.g. underfloor heating or cooling) according to the Roth room thermostat setting in the individual rooms, e.g. 23 °C.

### What to do if ...

> the operation mode switch is not working?

- Check connections at both ends of the line (see connection diagram).